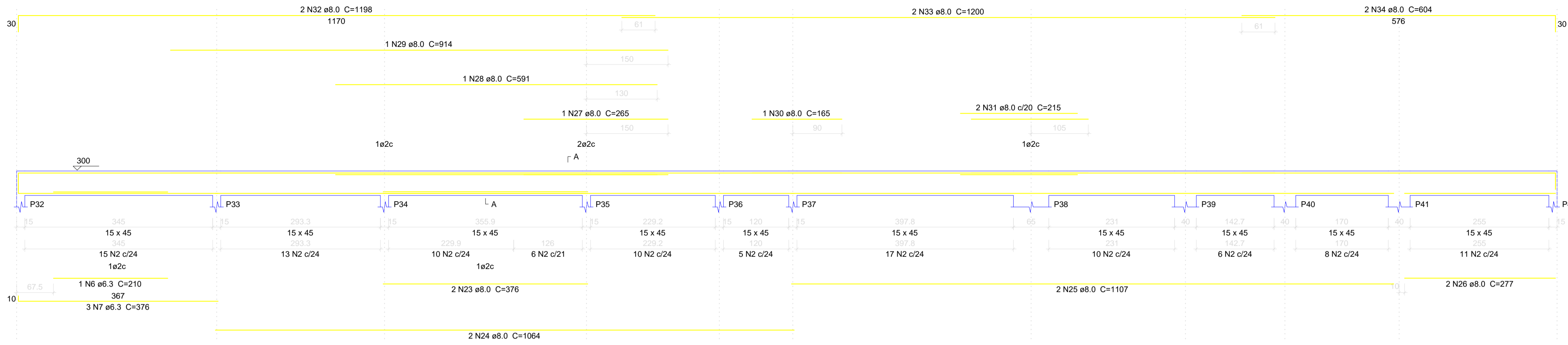
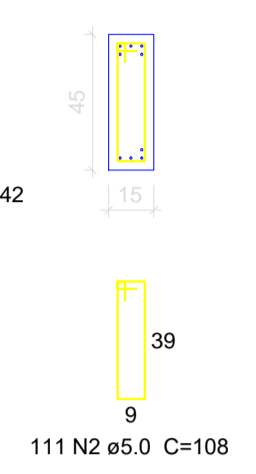


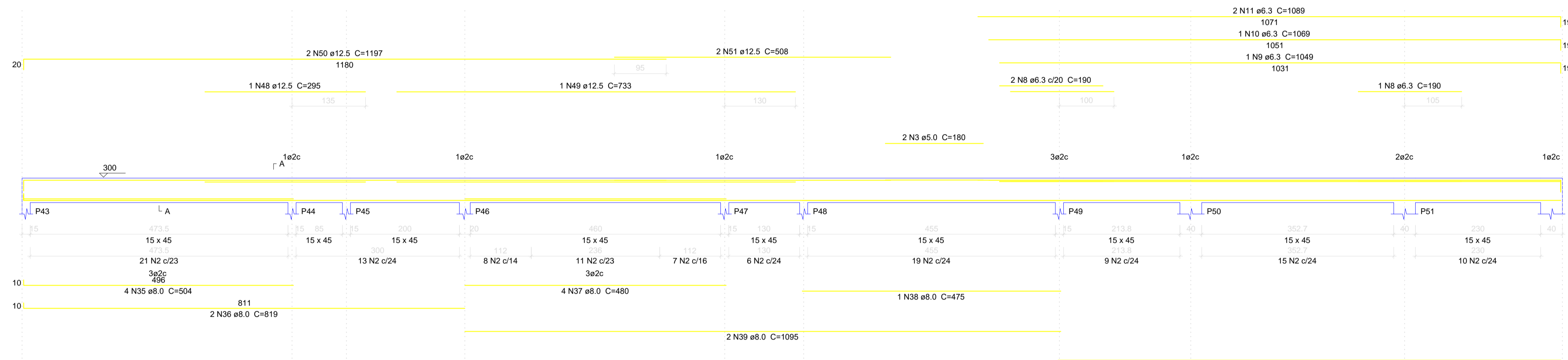
V9
ESC 1:50



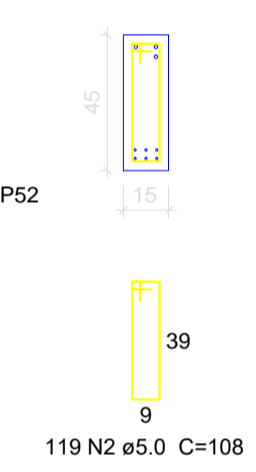
SEÇÃO A-A
ESC 1:25



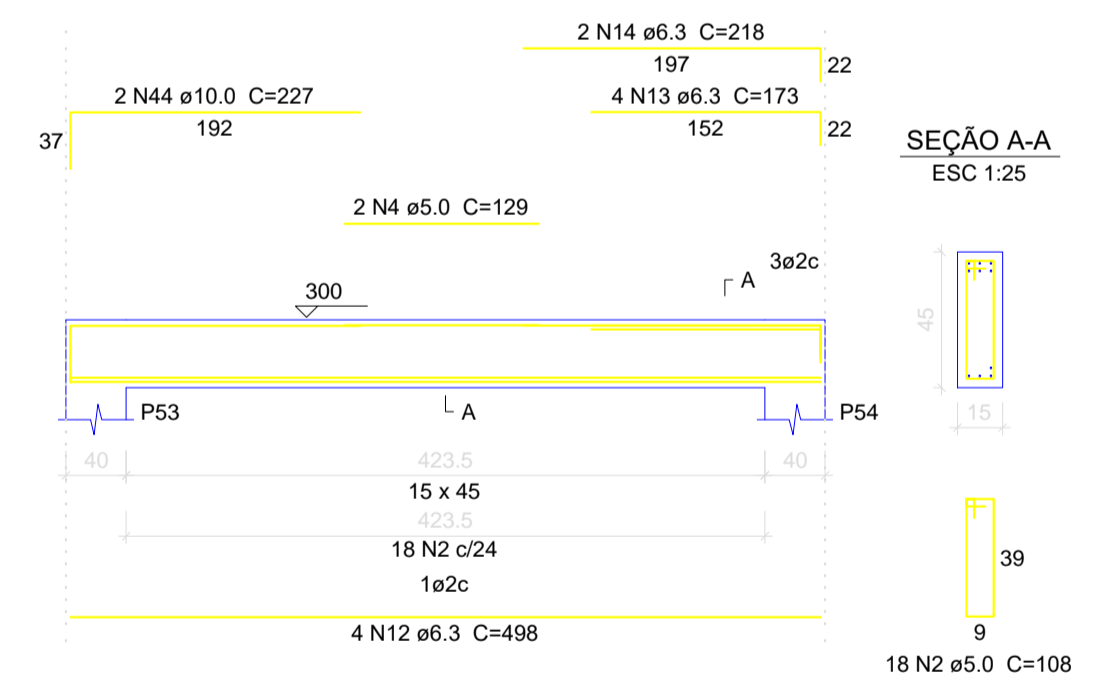
V10
ESC 1:50



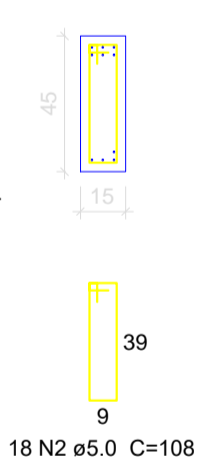
SEÇÃO A-A
ESC 1:25



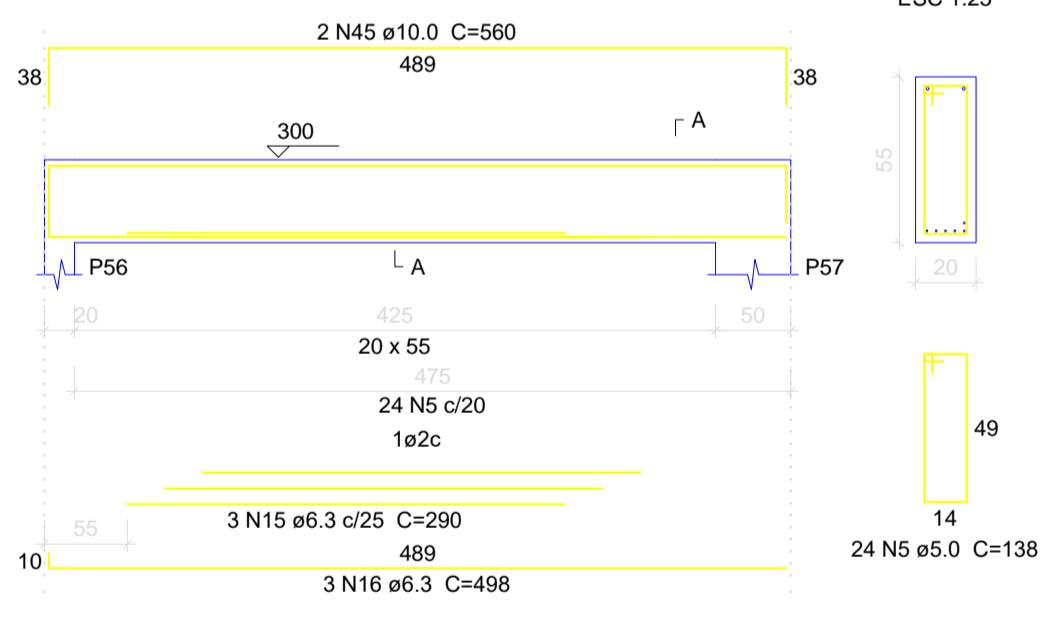
V11
ESC 1:50



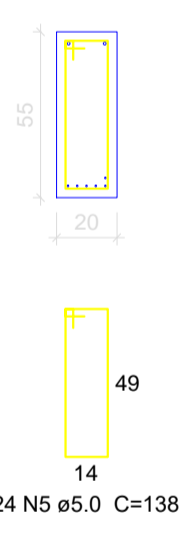
SEÇÃO A-A
ESC 1:25



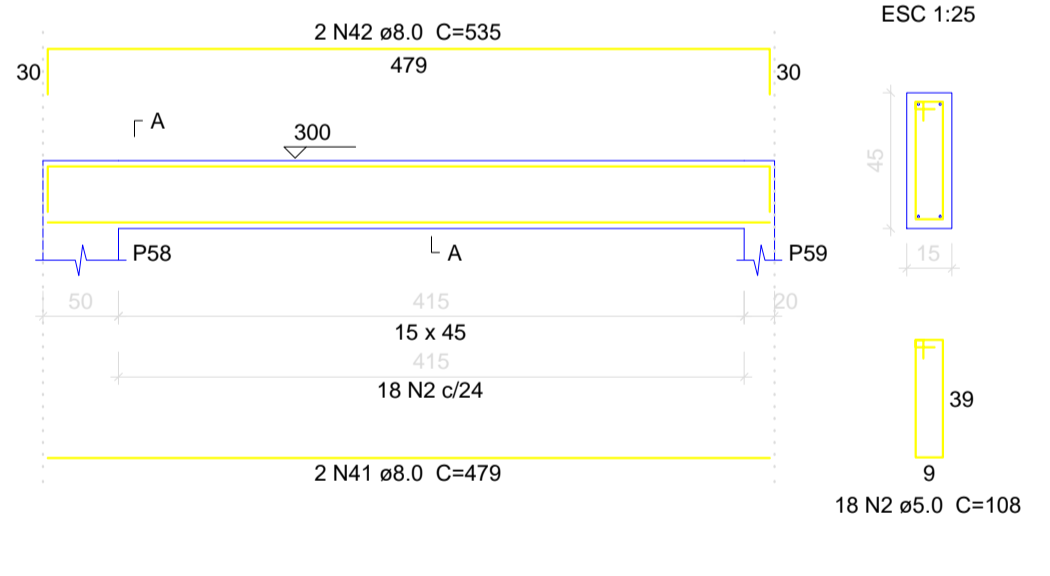
V12
ESC 1:50



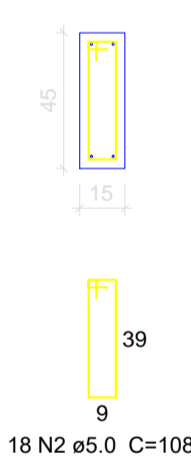
SEÇÃO A-A
ESC 1:25



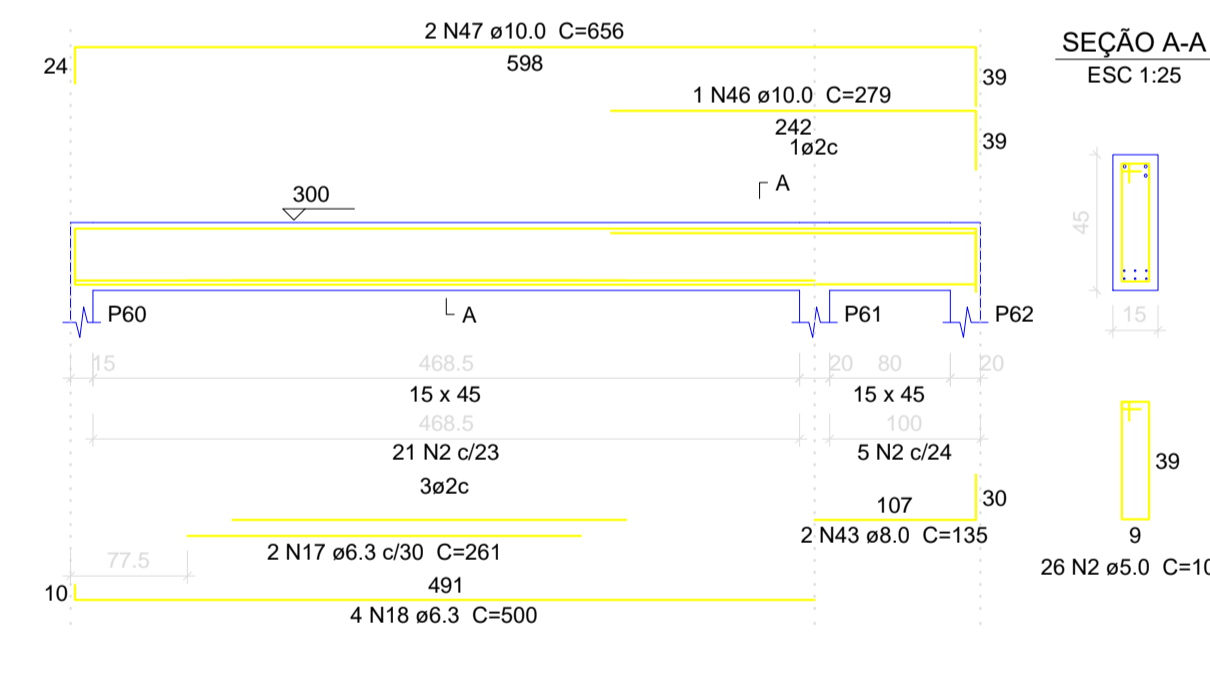
V13
ESC 1:50



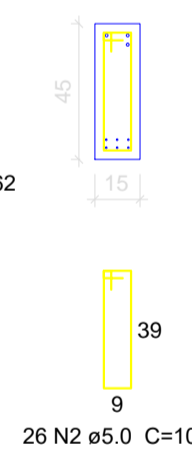
SEÇÃO A-A
ESC 1:25



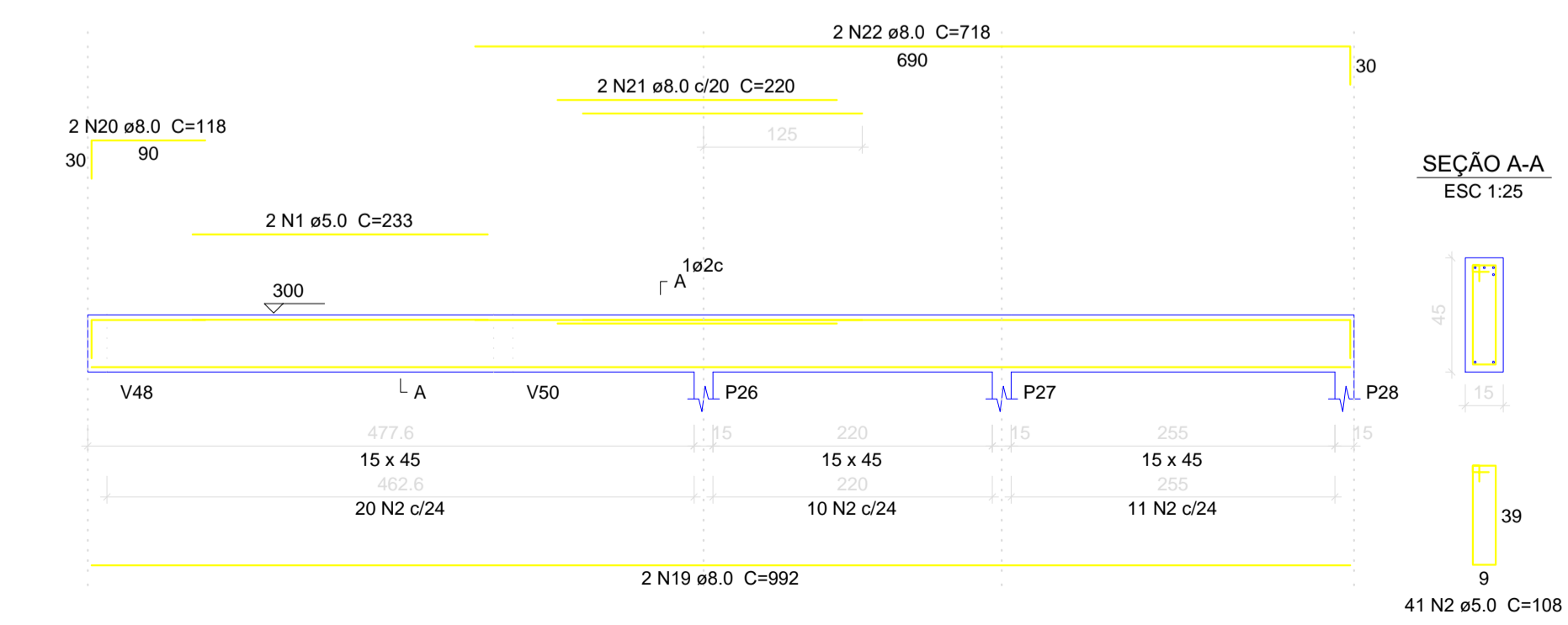
V14
ESC 1:50



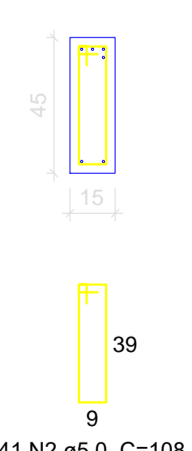
SEÇÃO A-A
ESC 1:25



V8
ESC 1:50



SEÇÃO A-A
ESC 1:25



Relação do aço

AÇO	N	DIAM (mm)	QUANT (Barras)	UNIT (cm)	C.TOTAL (cm)	AÇO (mm)	DIAM (mm)	C.TOTAL (m)	PESO + 10% (kg)
CA60	1	5.0	2	233	466	6.3	142.1	38.2	
	2	5.0	333	108	35964	8.0	305	132.4	
	3	5.0	2	180	360	10.0	31.7	21.5	
	4	5.0	2	129	258	12.5	44.4	47	
	5	5.0	24	138	3312	5.0	403.6	68.4	
	6	6.3	1	210	210				
	7	6.3	3	376	1128				
	8	6.3	3	190	570				
	9	6.3	1	1049	1049				
	10	6.3	1	1069	1069				
	11	6.3	2	1069	2138				
CA50	12	6.3	4	498	1992				
	13	6.3	4	173	692				
	14	6.3	2	218	436				
	15	6.3	3	290	870				
	16	6.3	3	498	1494				
	17	6.3	2	261	522				
	18	6.3	4	500	2000				
	19	8.0	2	992	1984				
	20	8.0	2	118	236				
	21	8.0	2	220	440				
	22	8.0	2	718	1436				
23	8.0	2	376	752					
24	8.0	2	1064	2128					
25	8.0	2	1107	2214					
26	8.0	2	277	554					
27	8.0	1	265	265					
28	8.0	1	591	591					
29	8.0	1	914	914					
30	8.0	1	165	165					
31	8.0	2	215	430					
32	8.0	2	1198	2396					
33	8.0	2	1200	2400					
34	8.0	2	604	1208					
35	8.0	4	504	2016					
36	8.0	2	819	1638					
37	8.0	4	480	1920					
38	8.0	1	475	475					
39	8.0	2	1095	2190					
40	8.0	2	924	1848					
41	8.0	2	479	958					
42	8.0	2	535	1070					
43	8.0	2	135	270					
44	10.0	2	227	454					
45	10.0	2	560	1120					
46	10.0	1	279	279					
47	10.0	2	656	1312					
48	12.5	1	295	295					
49	12.5	1	733	733					
50	12.5	2	1197	2394					
51	12.5	2	508	1016					



PROJETO DE ENGENHARIA PRANCHA 09/14

OBJETO: Projeto Estrutural Hospital Municipal
END: Rua 16 nº 1.063 - Bairro Nacib Jabur Maluf - Itapagipe/MG
PROP: Município de Itapagipe-MG
CPF/CNPJ: 21.226.840/0001-47

Quadro de assinaturas:	
Proprietário CPF/CNPJ	Benice Nery Maia Prefeita Municipal
Resp. Técnico CPF/CNPJ	Secretaria Municipal de Obras Rodolfo Costa Agreli CREA/SP:5070412203-LP

Aprovação: